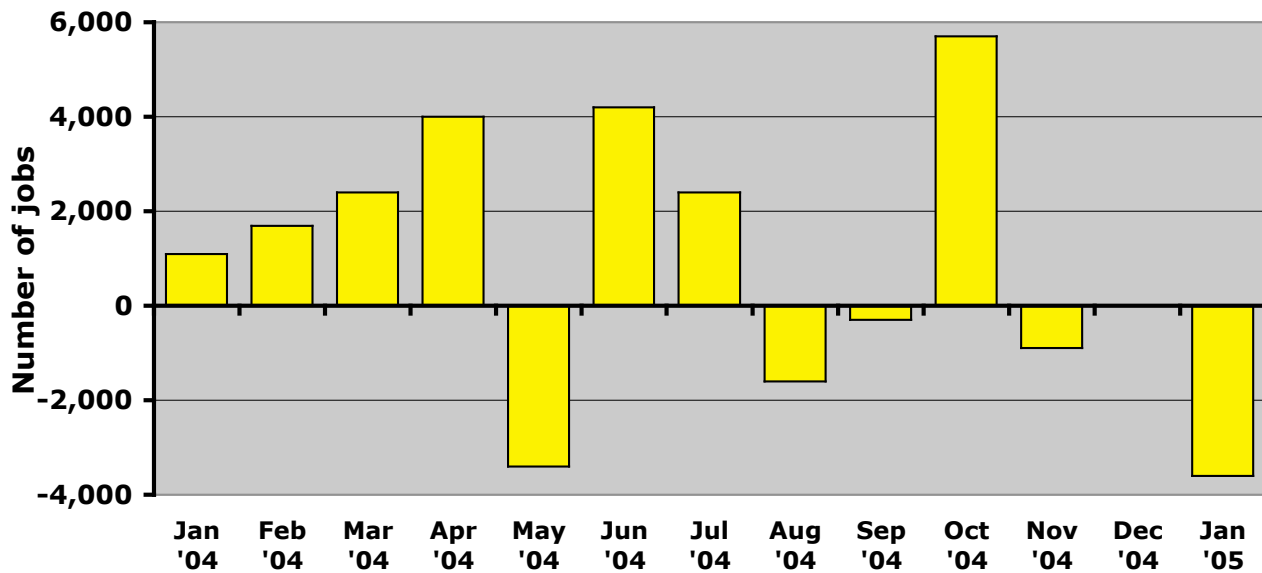


FOR IMMEDIATE RELEASE, THURSDAY, MARCH 17, 2005
 CONTACT: Mike Owen (319) 338-0773 or ipp@Lcom.net.

EDITORS: This graph illustrates the month-by-month change in nonfarm employment in Iowa from January 2004 through January 2005, using new figures released by the Bureau of Labor Statistics and Iowa Workforce Development.

Change in Iowa Nonfarm Employment, January 2004-January 2005



Change in Iowa Unemployment Rate Since Start of Last Recession

