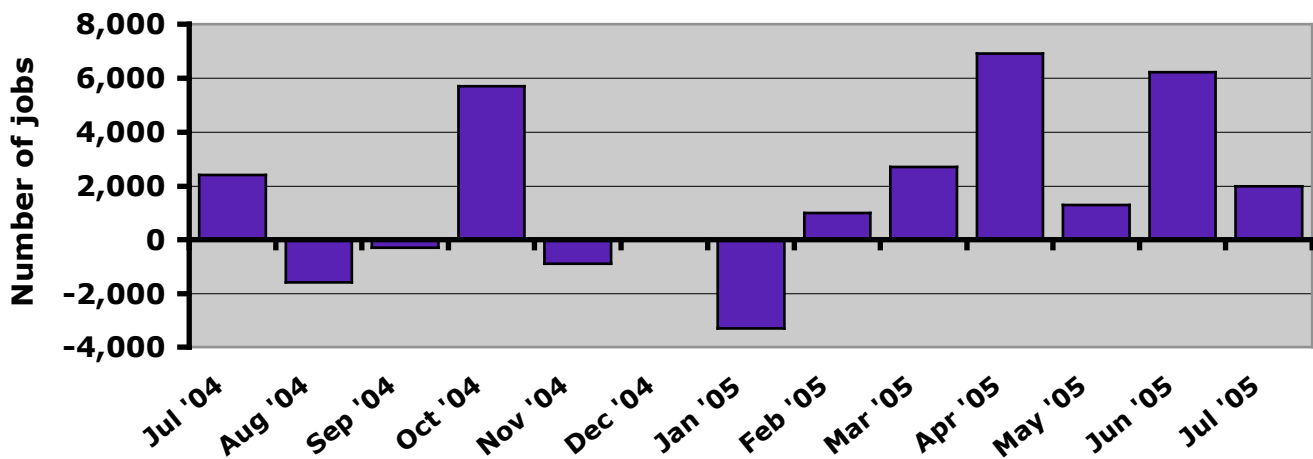


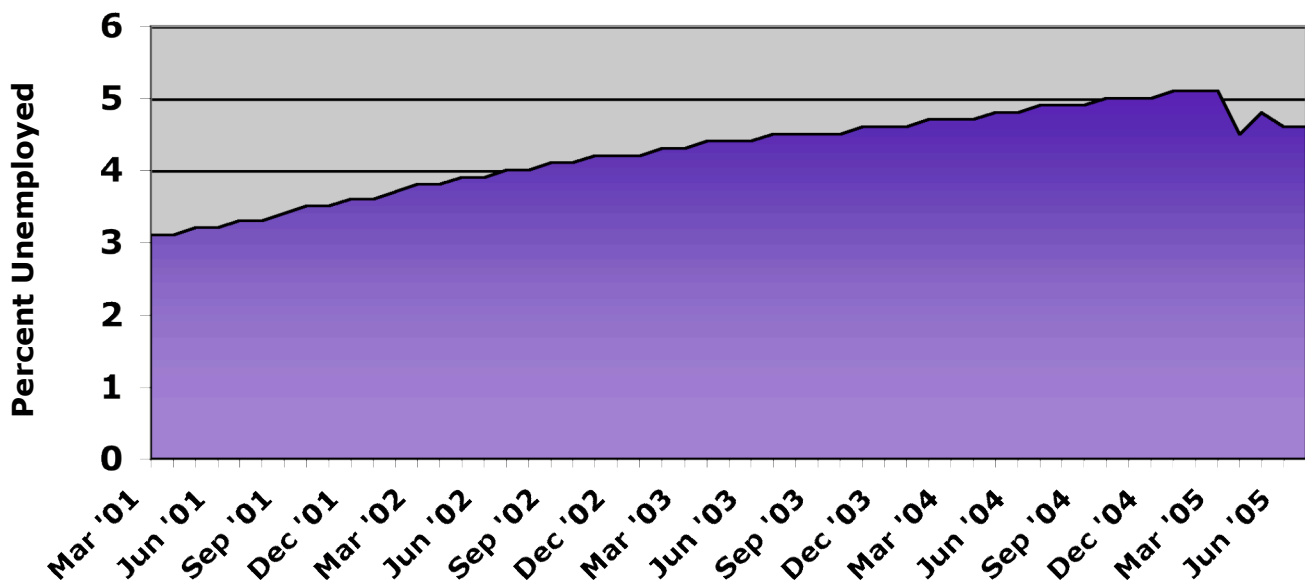
FOR IMMEDIATE RELEASE, THURSDAY, Aug. 18, 2005
CONTACT: Mike Owen (319) 338-0773 or ipp@Lcom.net.

EDITORS: These graphs illustrate the month-by-month changes in nonfarm employment in Iowa from July 2004 through July 2005, and in both the number of nonfarm jobs and the state unemployment rate since March 2001, the start of the last recession, using new figures released by the Bureau of Labor Statistics and Iowa Workforce Development. The March 2001 perspective offers a benchmark for the net change from the start of the last national recession, which ended in November 2001.

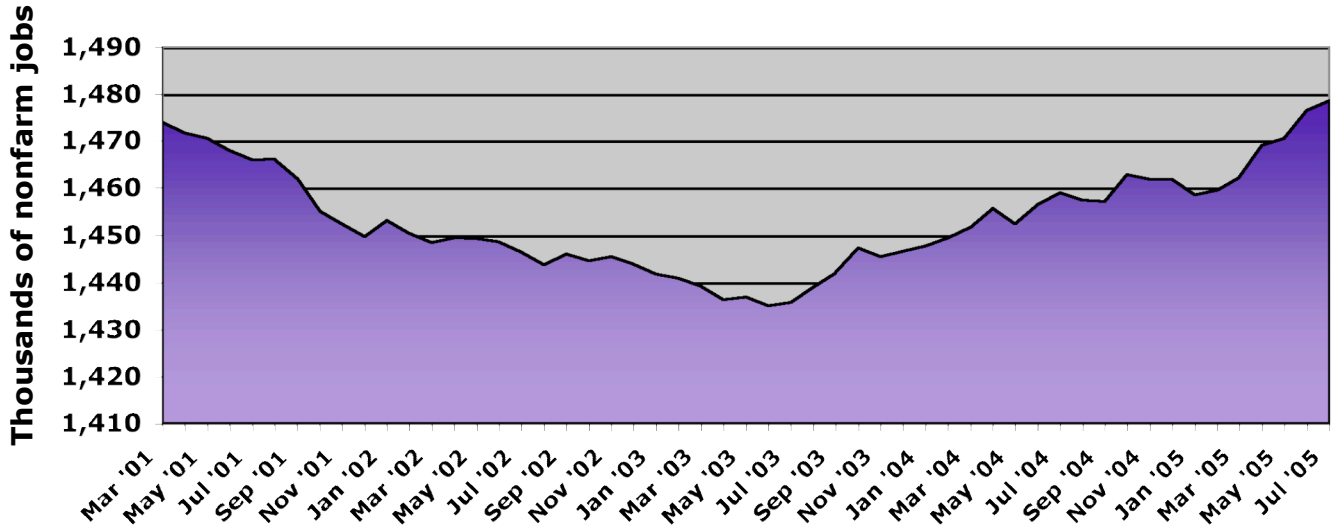
Change in Iowa Nonfarm Employment, July 2004-July 2005



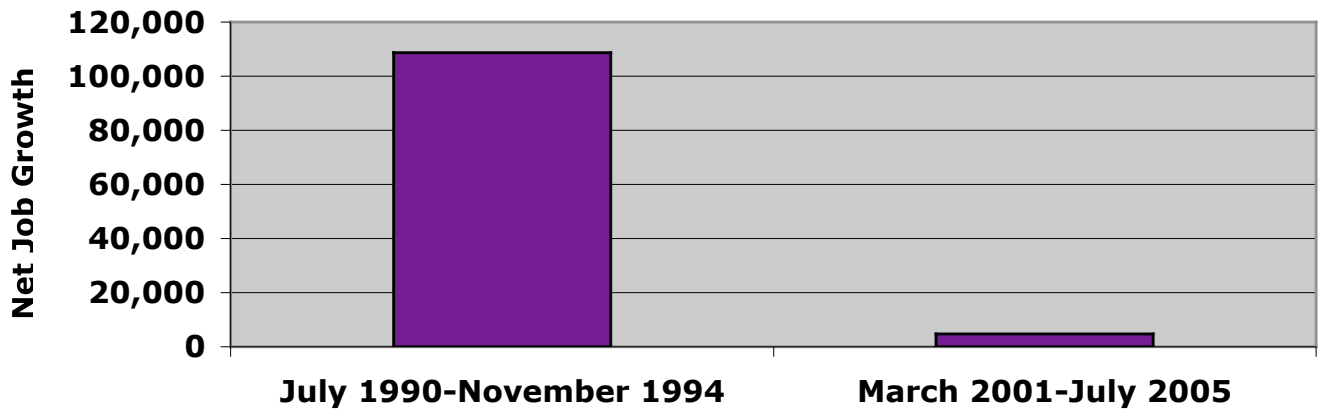
Change in Iowa Unemployment Rate Since Start of Last Recession



Change in Iowa Nonfarm Jobs Since Start of Last Recession



Two Recoveries at 52 Months



#